



Dear Course Participant, Welcome to the

preparation for the "ESDC BASIC COURSE ON SECURITY SECTOR REFORM" (11-12/10/1), Brussels, 2-4 April 2012
Internet-based Distance Learning Preparatory Module 34-12

This module was developed by the European Security and Defence College (ESDC) in co-operation with several well known European educational and research institutions. The purpose of the Internet-based Distance Learning (IDL) module is to assist your preparation for the residential course/ seminar you registered to.

The ESDC IDL concept is specific to adult education and is implementing the most advanced distance learning features. It is the result of the work done by the experts of the ESDC IDL Project Group, coming from several European institutions.

Educational Aim

At the end of the IDL module, you are expected to explain essential facts on the European developments toward the Common Security and Defence Policy (CSDP), on the European Security Strategy (ESS) content and significance, explain the EU institutional setting in the field of CSDP and describe the CSDP mission's decision-making process, in order to build a framework of understanding for the next residential course.

Content

The ESDC IDL Module "Basics of CSDP" consists of 2 Autonomous Knowledge Units (AKUs). Focusing on one learning objective, each AKU is dealing with a topical domain, in order:

- **AKU3 "Role of EU Institutions in the field of CFSP/ CSDP"** – the role played in the field CFSP/ CSDP by the European Council, EU Council, European Commission and European Parliament and the inter-institutional mechanisms involved, with a short insight on the financing of CSDP.
- **AKU4 "Overview of CSDP Operational Engagements"** - how the Common Security and Defence Policy functions, with emphasis on the policy decision-making, and on operations/ missions planning, command and control.

Qualification

Successfully completing this two IDL modules is mandatory, being seen as the preparatory part of your course. The module completion is pending **(1) on reading all the content of AKU3 and AKU4 learning unit (hit **<Finish>** button of every chapter)**, and **(2) on passing with at least 80% minimum score the confirmation test of both AKU's**. Your IDL manager will daily track your progress and scores, and will advise and guide you during the whole IDL preparation.

At this stage, you have also the option to look into AKU1 "**History and Context of ESDP**" and AKU2 "**European Security Strategy**". This AKU's are not mandatory to complete, but offers you the possibility to become familiar with the current institutional set-up of the EU in the CFSP field.

- AKU1 "History and Context of ESDP" – the history of the European security and defence co-operation and the development of CSDP, within the larger context of European integration.
- AKU2 "European Security Strategy" – the context in which the European Security Strategy was elaborated, the strategy's basic content, messages, role and its wide implications for the EU.

Methodology and Tasks

The ESDC IDL module "Basics of CSDP" was built around certain learning functions and instruments, specific to adult education.

During your study of the CSDP you will be:

- invited to read synthetic text that explains the basic messages of the topical area (AKU learning unit),
- recommended to study essential documents and to consult bibliography for further documentation, as necessary (AKU recommended readings),
- invited to evaluate the achievement of your learning objective, by answering short tests (AKU confirmation tests),
- offered access to the [CSDP Knowledge-base](#) (K-base), where you can find various information related to CSDP, and
- offered possibilities for consultation with experts and colleagues via the course forum and e-mail.

Helping the IDL development

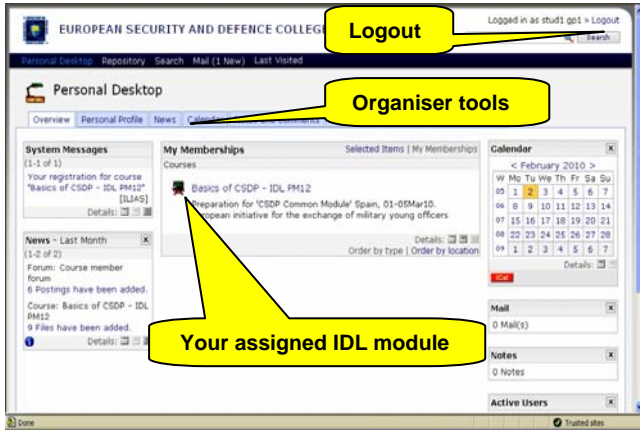
At the very end of the preparator y module we would li ke to know your opinion on it , in order to further improve the IDL system. You will be invited to answer a typi cal "sati sfaction" ques tionnaire, meant to ascertain your satisfaction with the IDL learning environment and outcome. Your opinions are very important and please take some minutes to answer this anonymous questionnaire.

CSDP Knowledge-base

Besides the reading material included in the docume nt folder, you are offered access to the CSDP Knowledge-base, which is a structured collection of information related to CSDP. The K-base content comes from multiple sources and is organised in a subject related tree structure that enables structural search and keyword search.

ILIAS LMS in short

Within the ILIAS environment, users are offered a wide array of tools and customisation options. These are available in the 'Personal Desktop' view (first appearance) and in the IDL module view.

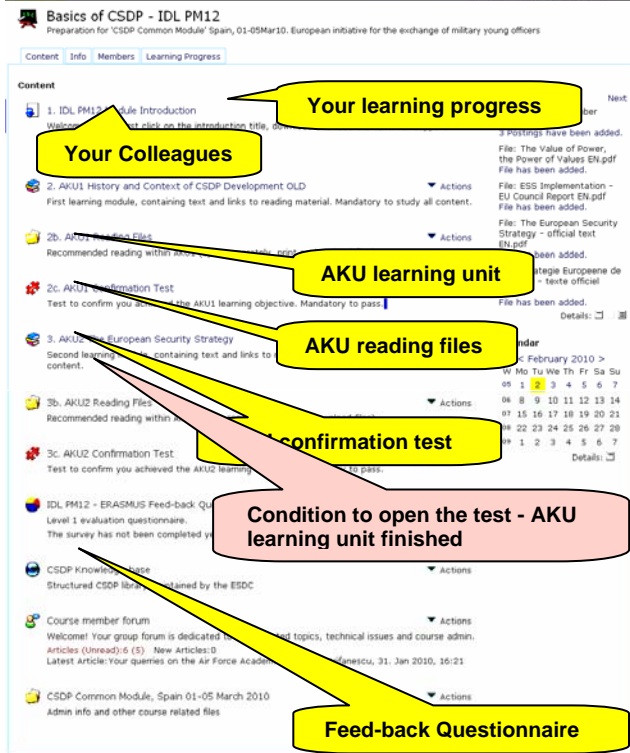


The personal desktop offers access to ILIAS resources (blue upper menu line), to personal settings, to personal info (light blue tabs), as well as to the current course environment (side blocks). The available/ registered courses are shown in the middle area.

All elements you find in other views can be linked for easy access to your personal desktop (select **Actions** and 'add to desktop' on the respective element display row).

Of interest might be the work organisation (calendar, notes, etc.) and group communication tools (forum and e-mailing), as well the active group members' list and other features.

Please explore and configure to your personal desktop!



The IDL module offers access to all elements associated with the learning process, organised in AKU groups, i.e.:

- AKU learning units,
- AKU reading files (recommended),
- AKU confirmation tests,

as well as to course specific

- links,
- feed-back questionnaire,
- forum and
- course admin info documents.

The forum is the place to discuss AKU topics with colleagues and the IDL manager; if necessary, academic advisors will join with their advice. General public topics are also open for technical and other general interest clarifications from the ESDC IDL manager.

In the same IDL module view you can see your course colleagues and check your learning progress (light blue upper tabs).

To access these educational instruments, you need to:

- Login to ILIAS with your user name and password, and then select from your desktop the IDL module you study.
- Open and study the first AKU learning unit (read content, apply for the recommended reading, research in the CSDP K-base, and other links, etc.). You can stop your study at any time and come back to the last chapter you read. **The AKU chapters open ONLY in their numbered order and you have to open all pages to get the AKU 100% completed. This is a precondition to have access to the next Confirmation Test.**
- Only after you completed the study of the AKU (all chapters) you can open and answer the respective AKU Confirmation Test in one session. If you have not passed the test with 80% you can try another attempt, redo some AKU study, or contact your IDL administrator (ESDC Secretariat).
- Do the same for every AKU of your IDL module. At any time, you can check your learning progress from the upper right light-blue tab.

- Explore and use the other tools available on the IDL module page. You can see and download your course admin documents, use the group e-mail facilities, get into the forum, and many more!

Technical Advice

For easy navigation and server address management, we recommend using as a unique starting point the ESDC website, at <http://esdc.mil-edu.be>. From the website right column, select <IDL modules ILIAS> to login to ILIAS, or upper menu bar select the <CSDP Knowledge-base> to enter the library.

Some recommendations:

Change of pages in ILIAS you are advised to prefer the page progress line (upper-left corner of the screen, third line) instead of the "Back" arrow of your browser. Most recommended is to hit the <Basics of CSDP> line, to move from one page to the home-page.

Full screen view of the chapter text, in the upper-left corner select <Hide tree>. After ending a chapter, to select another chapter just re-open the index with <Show tree>.

Log-out from ILIAS, please use the "Log out" function (upper right-hand corner) and avoid just exiting the browser.

Forum contributions are recommended via the 'Answer' tool rather than creating very particular new topics.

Navigation inside the CSDP K-base, should use the 2 level scroll menus (upper horizontal bar). For searching specific content, please use the K-base search function (more in the K-base intro page).

For technical assistance on using these on-line educational tools, please contact the ESDC IDL management at SECRETARIAT-ESDC@eeas.europa.eu tel: +32 2 281 2632, +32 2 281 2633

Thank to our Contributors

The IDL module was made possible thanks to the:

- valuable support with training materials and expertise of the Institutes (similar) member of the ESDC Network,
- dedicated work of the members of the ESDC IDL Project Group,
- contributions with information materials and specialist expertise from several bodies of the European Union, and
- **especially to the outstanding voluntary work of our major contributors to this module, namely:**



Geneva Centre for Security Policy
Centre de Politique de Sécurité, Genève
Genfer Zentrum für Sicherheitspolitik

Geneva Centre for Security Policy, Switzerland. AKU1 is developed and maintained by the Geneva Centre for Security Policy.



Egmont - Royal Institute for International Relations, Belgium. AKU2 is developed and maintained by the Egmont - Royal Institute for International Relations



National Defence Academy of Austria, Institute for Strategy and Security Policy. AKU3 is developed and maintained by the Institute for Strategy and Security Policy of Vienna



Zentrum für
Internationale
Friedenseinsätze

Centre for International Peace Operations GmbH, Germany. AKU4 is developed by the ESDC on the basis of ZIF produced information and training materials.



National Defence University, Romania. The ESDC IDL modules are developed on the ILIAS® 4.0.2 Learning Management System, hosted by the RO National Defence University.



Royal Military Academy, Belgium. The ESDC website and the CSDP K-base is developed on the Joomla/ DOCman® Content Management System, hosted by the BE Royal Military Academy.

Thank you!

We wish you enjoy this module!